

Model: GPC1500D5 | GPC1500SC5

Powered by CUMMINS



Generator Specification

Service	PRP ⁽¹⁾	ESP ⁽²⁾
Power (KVA)	1500	1650
Power (KW)	1200	1320
Rated speed	1500RPM	
Standard voltage	415/240V	
Power factor	0.8	
Phase	3	

Performance Data		
Model	GPC1500	
Engine brand	CUMMINS	
Engine model	KTA50-GS8	
Speed control type	EFC Electronic	
Alternator brand	STAMFORD	
Alternator model	S7L1D-C	
Control system	DEEPSEA DSE6120	
Starter motor voltage	24V	
Frequency	50Hz	
Fuel Consumption (KG/H)	100% Prime Load	263
	75% Prime Load	202
	50% Prime Load	142
	25% Prime Load	75



GENLITEC Power gensets are compliant with ISO 9001 and CE standard, which include the following directives:

- 2006/42/EC Machinery safety.
- 2006/95/EC Low voltage
- EN 60204-1: 2006+A1: 2009, EN ISO 12100: 2010, EN ISO 13849-1:2008, EN 12601: 2010

GPC1500D5: OPEN TYPE; GPC1500SC5: CONTAINERIZED TYPE

(1) PRP (Prime Power)

According to ISO 8528-1, prime power is the maximum power available during a variable power sequence, which may be run for an unlimited number of hours per year, between stated maintenance intervals. The permissible average power output during at 24 hours period shall not exceed 80% of the prime power. 10% overload available for governing purposes only.

(2) ESP (Standby Power)

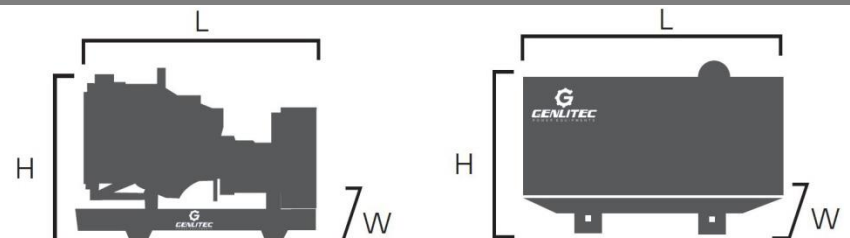
According to ISO 8528-1. It is defined as the maximum power available, under the agreed operating conditions, for which the generating set is capable of delivering for up to 500 hours of operation per year (of which no more than 300 hours for continuative use) with the maintenance intervals and procedures being carried out as prescribed by the manufactures. No overload capability is available.

Voltage (V)	ESP		PRP		Current Amps
	KVA	KW	KVA	KW	
415/240	1650	1320	1500	1200	2087
400/230	1650	1320	1500	1200	2165
380/220	1650	1320	1500	1200	2279

Standard Reference Conditions

Note: Standard reference condition 25°C (77°F) air inlet temp. 100m (328ft) A.S.L 30% relative humidity. Fuel consumption date with diesel fuel with specific gravity of 0.85 and conforming to BS 2869: 1998 Class A2

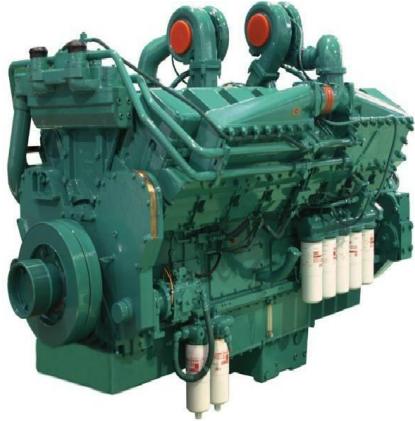
Dimension & Weight



Dimension	Open type	40HQ Containerized
Length (L)	5800mm	12192mm
Width (W)	2090mm	3438mm
Height (H)	2600mm	2591mm
Net Weight	10500kg	18900kg

Note: This parameters allows for some acceptable deviations.

■ **Engine Specification**



MODEL: CUMMINS KTA50-GS8	
Cylinder number	16-V
Aspiration system	Turbo, water/air cooling
Cooling method	Water cooled
Governor type	EFC Electronic
Bore x Stroke (mm)	159x159
Compression ratio	13.9:1
Rated speed (RPM)	1500
Displacement (L)	50
Rated power (KW)	1287
Standby power (KW)	1429
Oil consumption (g/kw.h)	≤4
Coolant capacity (L)	140 (Engine only)
Oil pan capacity (L)	204
Fuel system	CUMMINS PT Pump
Starter motor capacity	DC 24V

■ **Alternator Specification**



MODEL: STAMFORD S7L1D-C	
Number of phase	3
Rated power (KW/KVA)	1200/1500
Frequency (Hz)	50
Power factor (Cos Phi)	0.8
Poles	4
Temp. rise	125K
Terminals	12
Insulation type	H class
Ambient temp.	40°C
IP rating	IP23
Excitation system	Self-excited
Bearing	Single bearing
Coating	Vacuum impregnation
Voltage regulator	A.V.R
Coupling	Flexible disc

Standard Supply Scope

- Industrial exhaust silencer
- Maintenance free battery
- Water cooling radiator
- A.V.R
- Flexible pipes
- Battery wires
- Wiring diagram
- Build-in based fuel tank
- Float Battery charger
- Manual books
- Tool kits
- Emergency stop button
- Base frame
- Digital control panel
- Main circuit breaker

■ **Optional Supply Scope**

Engine	Alternator	Generator Sets	Control Panel
<ul style="list-style-type: none"> <input type="checkbox"/> Water jacket pre-heater <input type="checkbox"/> Lubrication oil pre-heater <input type="checkbox"/> Battery isolator 	<ul style="list-style-type: none"> <input type="checkbox"/> Anti-condensation heater <input type="checkbox"/> PMG <input type="checkbox"/> LEROY SOMER alternator <input type="checkbox"/> GENLITEC alternator 	<ul style="list-style-type: none"> <input type="checkbox"/> Extended fuel tank 12h/24h/72h <input type="checkbox"/> Soundproof canopy <input type="checkbox"/> Trailer mounted <input type="checkbox"/> 20GP containerized canopy 	<ul style="list-style-type: none"> <input type="checkbox"/> Remote control system <input type="checkbox"/> Build-in/External ATS <input type="checkbox"/> Synchronizing System <input type="checkbox"/> Power output sockets

■ **Warranty Period**

- 1 year or 1000 working hours, whichever comes first.
- GENLITEC Company will be limited with the supply of spare parts that are examined as manufacturing defects.
- CUMMINS engine and STAMFORD alternator will be subject to warranty policies from their companies. **(GLOBAL WARRANTY)**

■ Control Panel



DSE6110/20

AUTO START & AUTO MAINS FAILURE CONTROL MODULES

FEATURES



DSE6120

DSE6110



KEY FEATURES

- Back-lit text LCD display
- Front panel editing
- LED and LCD alarm indication
- Power Save mode
- CAN and Magnetic Pick-up/Alt. versions available (specify on ordering)
- PC and front panel configuration
- 6 Digital inputs
- 3 Analogue inputs
- 6 Outputs (4 configurable on Magnetic Pick-up/Alt., 6 configurable on CAN version)
- Configurable timers and alarms
- Alternative configuration
- Event Log (10)
- Remote Start input
- 3 Phase generator monitoring

- Current Monitoring and protection
- 3 Phase Mains (Utility) monitoring (DSE6120 only)
- Test button (DSE6120 only)
- Battery voltage monitoring
- Engine pre-heat
- Hours counter
- Comprehensive shutdown or warning on fault condition

KEY BENEFITS

- Automatically transfers between mains (utility) and generator power (DSE6120 only)
- Hours counter provides accurate information for monitoring and maintenance periods
- User-friendly set-up and button layout

- Multiple engine parameters are monitored simultaneously
- Module can be configured to suit individual applications
- Compatible with a wide range of CAN engines
- Tier 4 engine support
- Uses DSE Configuration Suite PC software for simplified configuration
- IP65 rating (with optional gasket) offers increased resistance to water ingress
- Licence-free PC software

SPECIFICATION

DC SUPPLY

CONTINUOUS VOLTAGE RATING
8 V to 35 V Continuous

CRANKING DROPOUTS

Able to survive 0 V for 50 mS, providing supply was at least 10 V before dropout and supply recovers to 5 V. This is achieved without the need for internal batteries. LEDs and backlight will not be maintained during cranking.

MAXIMUM OPERATING CURRENT

178 mA at 12 V, 95 mA at 24 V

MAXIMUM STANDBY CURRENT

88 mA at 12 V, 50 mA at 24 V

CHARGE FAIL/EXCITATION RANGE

0 V to 35 V

MAINS (UTILITY) DSE6120 ONLY

VOLTAGE RANGE
15 V - 333 V AC (L-N)

FREQUENCY RANGE

3.5 Hz to 75 Hz

OUTPUTS

OUTPUT A (FUEL)
2 A DC at supply voltage

OUTPUT B (START)
2 A DC at supply voltage

AUXILIARY OUTPUTS C,D,E & F
2 A DC at supply voltage

GENERATOR

VOLTAGE RANGE
15 V - 333 V AC (L-N)

FREQUENCY RANGE

3.5 Hz to 75 Hz

MAGNETIC PICK UP

VOLTAGE RANGE
+/- 0.5 V to 70 V

FREQUENCY RANGE

10,000 Hz (max)

DIMENSIONS

OVERALL
215 mm x 158 mm x 42 mm
8.5" x 6.2" x 1.6"

PANEL CUT-OUT

182 mm x 137 mm
7.2" x 5.4"

MAXIMUM PANEL THICKNESS

8 mm
0.3"

STORAGE TEMPERATURE RANGE

-40 °C to +85 °C