

■ Model: **GLT1600L-7VMY**

Powered by YANMAR



■ Generator Specification

| Service | PRP(1) | ESP(2) |
|-------------------|------------------|--------|
| Genset power (KW) | 6.0 | 7.0 |
| Voltage | 220V, 230V, 240V | |
| Frequency | 50/60Hz | |
| Engine speed | 1500/1800R.P.M | |
| Power factor | 1.0 | |
| Phase | Single | |

| Performance Data | |
|------------------------------|--------------------------|
| Model | GLT1600L-7VMY |
| Engine brand | YANMAR |
| Engine model | 3TNV76 |
| Speed control type | Mechanical |
| Alternator brand | GENLITEC |
| Alternator model | S164G8 |
| Control system | SMARTGEN HGM1790N |
| Starter motor voltage | 12V |
| Max. height of mast | 7 metres |
| Mast lifting/lowering system | Vertical, Manual Lifting |
| Total power of lamps | 4x400 watts LED |
| Fuel consumption (100% load) | 2.0L/H |
| Fuel tank capacity | 100L |



GENLITEC Power lighting towers & generator sets are compliant with ISO 9001 and CE standard, which include the following directives:

- 2006/42/EC Machinery safety.
- 2006/95/EC Low voltage
- EN 60204-1: 2006+A1: 2009, EN ISO 12100: 2010, EN ISO 13849-1:2008, EN 12601: 2010

(1) PRP (Prime Power)

According to ISO 8528-1, prime power is the maximum power available during a variable power sequence, which may be run for an unlimited number of hours per year, between stated maintenance intervals. The permissible average power output during at 24 hours period shall not exceed 80% of the prime power. 10% overload available for governing purposes only.

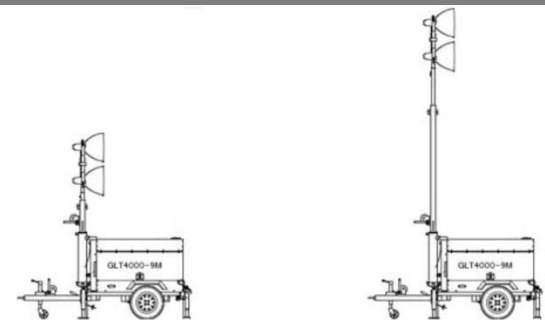
(2) ESP (Standby Power)

According to ISO 8528-1. It is defined as the maximum power available, under the agreed operating conditions, for which the generating set is capable of delivering for up to 500 hours of operation per year (of which no more than 300 hours for continuative use) with the maintenance intervals and procedures being carried out as prescribed by the manufactures. No overload capability is available.

Standard Reference Conditions

Note: Standard reference condition 25°C (77°F) air inlet temp. 100m (328ft) A.S.L 30% relative humidity. Fuel consumption date with diesel fuel with specific gravity of 0.85 and conforming to BS 2869: 1998 Class A2

Dimension & Weight



| Dimension | Storage | Working |
|------------|---------|---------|
| Length (L) | 2710mm | 3050mm |
| Width (W) | 1410mm | 2500mm |
| Height (H) | 2760mm | 7000mm |
| Net Weight | 810kg | |

Note: This parameters allows for some acceptable deviations.

Container Loading Capacity

6 SETS / 20GP

12 SETS / 40GP



■ Engine Specification



MODEL: YANMAR 3TNV76

| | |
|-----------------------------------|-------------------|
| Cylinder number | 3 |
| Aspiration system | Natural |
| Cooling method | Water cooled |
| Governor type | Direct injection |
| Bore x Stroke (mm) | 76x82 |
| Compression ratio | 19:1 |
| Rated speed (RPM) | 1500 |
| Displacement (L) | 1.116 |
| Rated power (KW) | 8.2 |
| Standby power (KW) | 9.0 |
| Firing order | YPD-MP2 |
| Steady state speed regulation (%) | 0.9 (engine only) |
| Oil capacity (L) | 3.4 |
| Fuel consumption (g/kw.h) | 12V |
| Starter motor capacity | DC 12V |

■ Alternator Specification



MODEL: GENLITEC S164G8

| | |
|------------------------|---------------------|
| Number of phase | Single |
| Rated power (KW) | 8 |
| Frequency (Hz) | 50/60 |
| Power factor (Cos Phi) | 1 |
| Temp. rise | 125K |
| Insulation type | H class |
| Ambient temp. | 40°C |
| IP rating | IP23 |
| Excitation system | Self-excited |
| Bearing | Single bearing |
| Coating | Vacuum impregnation |
| Voltage regulator | A.V.R |
| Coupling | Flexible disc |

■ Operation Mast Specification

| | |
|------------------------------|--------------------------|
| Max. height of mast | 7m |
| Elevation system | Vertical, Mechanical |
| Raising/Lowering mast method | Manual winch |
| Mast stages | 6 |
| Turning angle | 358° manually |
| Mast material | Galvanization Steel tube |
| Self-lock Winch | 1 x 1800lbs |

■ Lamps Specification

| | |
|----------------------|------------------|
| Total power of lamps | 4 x 400 watts |
| Lamps type | LED |
| Light capacity | 4 x 60,000 lumen |
| Design lifetime | 50000 hours |
| Working temperature | -25°C ~ 50°C |
| Light coverage | 5 ~ 7 acres |
| Protection grade | IP65 |

■ Chassis Specification

| | |
|--------------------|----------------------------|
| Tow Hitch type | "O" ring or Ball tow hitch |
| Brake type | Mechanical hand brake |
| Trailer structure | Single axle |
| Tyre size | 13 inch |
| Leveling jack type | 5 x Manual |

■ Controller Panel Specification

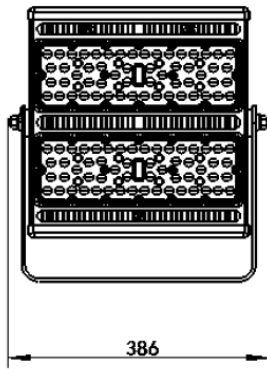
| | |
|----------------------|------------------------------|
| Control module | SMARTGEN HGM1790N |
| Main & Lamps Breaker | DELIXI |
| Emergency stop | Equipped |
| Starting method | Electric (Key start/Button)) |
| Output Socket | 2 x 16A single phase |

LED Lights Detailed Technical Data

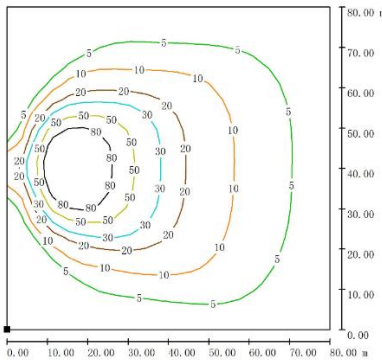
Image



Dimension



Standard distribution curve flux (90°)



| | |
|-----------------------|------------------------------|
| Description | LED Spotlight |
| Model number | SMD-400W |
| Light power | 400W LED |
| Installation method | "U" type holder |
| Working temperature | -40°C ~ 50°C |
| Rated voltage | AC 100-277V |
| Rated frequency | 50/60Hz |
| Power factor | ≥0.95 |
| Design lifetime | 50000 hours |
| Protection grade | IP65 |
| Certificates | 3C, UL, CE |
| Light cover material | Aluminum |
| Radiate unit | Aluminum radiator |
| Lighting angle | 25° , 40° , 60° , 90° , 110° |
| Luminous efficacy | 150Lm/W |
| Luminous flux | 60000Lm@5000K |
| Color temperature | 5700±300K |
| Color rendering index | RA≥70@5000K |
| Light source | Single unit LED |

Standard Supply Scope

- Industrial exhaust silencer
- Maintenance free battery
- Water cooling radiator
- A.V.R
- Weather proof canopy
- Flexible pipes
- Battery wires
- Wiring diagram
- Build-in based fuel tank
- Top caution light
- Float Battery charger
- Manual books
- Tool kits
- Emergency stop button
- Ball/Ring hitch with safe chain
- Base frame
- Digital control panel
- Main circuit breaker
- Power output socket x 2

Optional Supply Scope

| Engine | Alternator | Control Panel | Lamps |
|--|---|--|--|
| <input type="checkbox"/> KUBOTA D1105 engine | <input type="checkbox"/> STAMFORD alternator | <input type="checkbox"/> Smartgen ALC controller | <input type="checkbox"/> 4x1500W lamps |
| <input type="checkbox"/> PERKINS 403D-11G engine | <input type="checkbox"/> MECC ALTE alternator | <input type="checkbox"/> Sunrise & sunset start/stop | <input type="checkbox"/> Spotlights |
| <input type="checkbox"/> QUANCHAI QC380D engine | | <input type="checkbox"/> Remote start/stop | <input type="checkbox"/> 4x350W LED Spotlights |
| <input type="checkbox"/> Battery isolator | | <input type="checkbox"/> Deepsea DSEL401 MKII | <input type="checkbox"/> 4x1000W MH Lamps |
| | | <input type="checkbox"/> ComAp Inteli-Nano | |
| | | <input type="checkbox"/> ABB breakers | |
| | | <input type="checkbox"/> Power output socket x 2 | |

Control Panel

Configuration

- Emergency stop button
- Protection MCB + Lamps & Socket circuit breaker
- Digital control module
- Power output socket x 1 (Single Phase)
- Weather proof controller box
- Alarm buzzer



Key Features

- Large back-lit icon LCD display
- Single / Three phase generator monitoring
- AC phase voltage display
- Generator frequency display
- Engine speed RPM display
- Battery voltage Vdc display
- Generator running hours display
- Engine coolant temperature display
- Engine oil pressure display
- Pre-alarm & shutdown alarm function
- Low oil pressure shutdown alarm
- Engine high temperature shutdown alarm
- Engine over speed shutdown alarm
- Generator over/under voltage shutdown alarm
- Generator over load shutdown alarm
- Start/Stop failure shutdown alarm
- IP65 rating offers increased resistance to water ingress

Control Module: SMARTGEN HGM1790N

| | |
|-------------------------|---------------------------|
| Digital input | 5 |
| Relay output | 5 |
| Communication interface | PC |
| AMF | M/A |
| AC System | 1P2W / 2P3W / 3P3W / 3P4W |
| Phase voltage input | 0-300Vac |
| Frequency range | 3Hz – 70Hz |
| Standby current | TBA |
| Accuracy | 1% |
| Control relay outputs | 3A/30Vdc |
| DC supply | DC 8-35V |
| Operating temp. | -20 ~ +70°C |

Controller Module Options

| SMARTGEN | COMAP | DEESEA |
|----------|-------------|--------------|
| ALC404 | Inteli Nano | DSEL401 MKII |
| | | |

GENLITEC POWER TECHNOLOGY CO., LTD.
 GENLITEC (FUZHOU) POWER EQUIPMET CO., LTD.
 marketing@genlitech.com | www.genlitechpower.com

All information in the document is substantially correct at the time of printing
 But may be subsequently altered by the company.