

# Model: GPC800D5 | GPC800S5

Powered by CUMMINS



## Generator Specification

Service	PRP(1)	ESP(2)
Power (KVA)	800	880
Power (KW)	640	704
Rated speed	1500RPM	
Standard voltage	400/230V	
Power factor	0.8	
Phase	3	

Performance Data		
Model	GPC800D5   GPC800S5	
Engine brand	CUMMINS	
Engine model	KTA38-G2B	
Speed control type	Electronic	
Alternator brand	STAMFORD   GENLITEC	
Alternator model	HCI634G   S404G640	
Control system	SMARTGEN HGM6120N	
Starter motor voltage	24V	
Frequency	50Hz	
Fuel Consumption (Kg/H)	100% Prime Load	142
	75% Prime Load	109
	50% Prime Load	77
	25% Prime Load	45



GENLITEC Power gensets are compliant with ISO 9001 and CE standard, which include the following directives:

- 2006/42/EC Machinery safety.
- 2006/95/EC Low voltage
- EN 60204-1: 2006+A1: 2009, EN ISO 12100: 2010, EN ISO 13849-1:2008, EN 12601: 2010

• **GPC800D5: OPEN TYPE; GPC800S5: SILENT TYPE**

### (1) PRP (Prime Power)

According to ISO 8528-1, prime power is the maximum power available during a variable power sequence, which may be run for an unlimited number of hours per year, between stated maintenance intervals. The permissible average power output during at 24 hours period shall not exceed 80% of the prime power. 10% overload available for governing purposes only.

### (2) ESP (Standby Power)

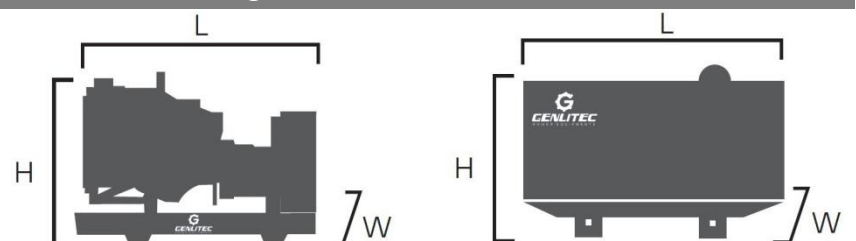
According to ISO 8528-1. It is defined as the maximum power available, under the agreed operating conditions, for which the generating set is capable of delivering for up to 500 hours of operation per year (of which no more than 300 hours for continuative use) with the maintenance intervals and procedures being carried out as prescribed by the manufactures. No overload capability is available.

Voltage (V)	ESP		PRP		Current Amps
	KVA	KW	KVA	KW	
415/240	880	704	800	640	1114
400/230	880	704	800	640	1155
380/220	880	704	800	640	1216

### Standard Reference Conditions

Note: Standard reference condition 25°C (77°F) air inlet temp. 100m (328ft) A.S.L 30% relative humidity. Fuel consumption date with diesel fuel with specific gravity of 0.85 and conforming to BS 2869: 1998 Class A2

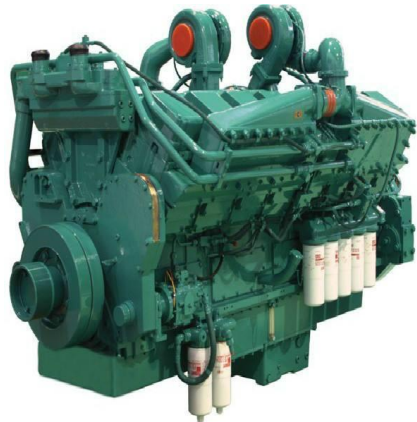
### Dimension & Weight



Dimension	Open type	Silent type 20GP Container
Length (L)	4500mm	6058mm
Width (W)	2060mm	2438mm
Height (H)	2165mm	2591mm
Net Weight	7150kg	12000kg

Note: This parameters allows for some acceptable deviations.

■ **Engine Specification**



MODEL: CUMMINS KTA38-G2B	
Cylinder number	V - 12
Aspiration system	Turbo, Water/Air Cooling
Cooling method	Water cooled
Governor type	EFC Electronic
Bore x Stroke (mm)	159x159
Compression ratio	14.5:1
Rated speed (RPM)	1500
Displacement (L)	37.8
Rated power (KW)	711
Standby power (KW)	789
Oil consumption (g/kw.h)	≤4
Coolant capacity (L)	258
Oil pan capacity (L)	135
Fuel system	CUMMINS PT pump
Starter motor capacity	DC 24V

■ **Alternator Specification**



MODEL: STAMFORD HCI634G   GENLITEC S404G640	
Number of phase	3
Rated power (KW/KVA)	640/800
Frequency (Hz)	50
Power factor (Cos Phi)	0.8
Poles	4
Temp. rise	125K
Terminals	12
Insulation type	H class
Ambient temp.	40°C
IP rating	IP23
Excitation system	Self-excited
Bearing	Single bearing
Coating	Vacuum impregnation
Voltage regulator	A.V.R
Coupling	Flexible disc

**Standard Supply Scope**

- Industrial exhaust silencer
- Maintenance free battery
- Water cooling radiator
- A.V.R
- Flexible pipes
- Battery wires
- Wiring diagram
- Build-in based fuel tank
- Float Battery charger
- Manual books
- Tool kits
- Emergency stop button
- Base frame
- Digital control panel
- Main circuit breaker

■ **Optional Supply Scope**

Engine	Alternator	Generator Sets	Control Panel
○ Water jacket pre-heater	○ Anti-condensation heater	○ Extended fuel tank 12h/24h/72h	○ Remote control system
○ Lubrication oil pre-heater	○ PMG	○ Soundproof canopy	○ Build-in/External ATS
○ Battery isolator	○ LEROY SOMER alternator	○ Trailer mounted	○ Synchronizing System
	○ GENLITEC alternator	○ 20GP containerized canopy	○ Power output sockets

■ Control Panel

**Configuration**

- Emergency stop button
- Protection MCB (Main circuit breaker)
- Float battery charger
- ATS connection
- AMF digital control module
- Fuel level meter
- Controller power switch
- Alarm buzzer



**Features**

- Chinese, English, Spanish, Turkish, Russian & French language
- Three phase generator monitoring
- Automatic or manual start/stop of the gensets
- Push buttons for simple control & operation
- Generator measurements (50Hz/60Hz)
- Precision collect & display parameters about ENGINE
- Comprehensive shutdown or warning on fault condition
- Three phase generator protections
  - Over / under voltage
  - Over / under frequency
  - Current / voltage asymmetry
  - Over current / overload
- Three phase AMF function
  - Over / under voltage
  - Loss of phase detection function
- Emergency start function
- IP55 waterproof with rubber-ring gasket

**Control Module Model: SMARTGEN HGM6120N**

Display	LCD (132 x 64)
Operation panel	Silicon rubber
Digital input	5
Relay output	6
Analogue input	3
AMF	Yes
AC System	1P2W / 2P3W / 3P3W / 3P4W
Alternator voltage	15-360V (ph-N)
Alternator frequency	50/60Hz
KW/Amp Detecting & Display	Yes
Monitor interface	USB
Programmable interface	USB
DC supply	DC 8-35V
Operating temp.	-25 ~ +70°C

■ Controller Module Options

COMAP	DEEPSEA	DEEPSEA
AMF25	DSE6120	DSE7320
		