

■ Model: GPC910D5 | GPC910SC5

Powered by CUMMINS



■ Generator Specification

Service	PRP(1)	ESP(2)
Power (KVA)	728	800
Power (KW)	910	1000
Rated speed	1500RPM	
Standard voltage	400/230V	
Power factor	0.8	
Phase	3	

Performance Data		
Model	GPC910	
Engine brand	CUMMINS	
Engine model	KTA38-G2A	
Speed control type	EFC Electronic	
Alternator brand	LEROY SOMER	
Alternator model	TAL-A49-D	
Control system	SMARTGEN HGM6120N	
Starter motor voltage	24V	
Frequency	50Hz	
Fuel Consumption (L/H)	100% Prime Load	191
	75% Prime Load	147
	50% Prime Load	98
	25% Prime Load	51



GENLITEC Power gensets are compliant with ISO 9001 and CE standard, which include the following directives:

- 2006/42/EC Machinery safety.
- 2006/95/EC Low voltage
- EN 60204-1: 2006+A1: 2009, EN ISO 12100: 2010, EN ISO 13849-1:2008, EN 12601: 2010

■ GPC910D5: OPEN TYPE; GPC910SC5: CONTAINERIZED TYPE

(1) PRP (Prime Power)

According to ISO 8528-1, prime power is the maximum power available during a variable power sequence, which may be run for an unlimited number of hours per year, between stated maintenance intervals. The permissible average power output during at 24 hours period shall not exceed 80% of the prime power. 10% overload available for governing purposes only.

(2) ESP (Standby Power)

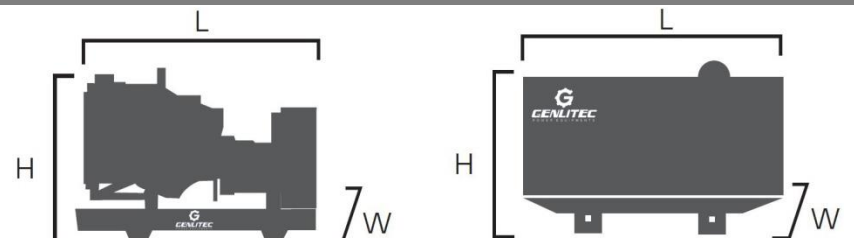
According to ISO 8528-1. It is defined as the maximum power available, under the agreed operating conditions, for which the generating set is capable of delivering for up to 500 hours of operation per year (of which no more than 300 hours for continuative use) with the maintenance intervals and procedures being carried out as prescribed by the manufactures. No overload capability is available.

Voltage (V)	ESP		PRP		Current Amps
	KVA	KW	KVA	KW	
415/240	1000	800	910	728	1266
400/230	1000	800	910	728	1313
380/220	1000	800	910	728	1382

Standard Reference Conditions

Note: Standard reference condition 25°C (77°F) air inlet temp. 100m (328ft) A.S.L 30% relative humidity. Fuel consumption date with diesel fuel with specific gravity of 0.85 and conforming to BS 2869: 1998 Class A2

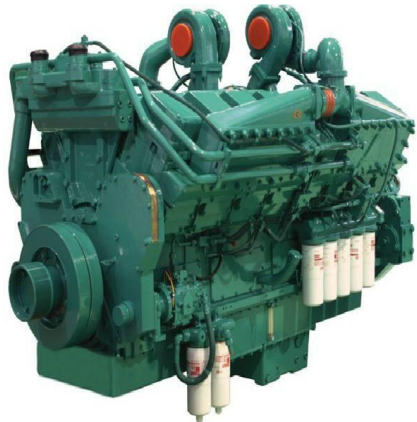
Dimension & Weight



Dimension	Open type	Silent type
Length (L)	4490mm	6058mm
Width (W)	2060mm	2438mm
Height (H)	2165mm	2591mm
Net Weight	7150kg	12200kg

Note: This parameters allows for some acceptable deviations.

■ **Engine Specification**



MODEL: CUMMINS KTA38-G2A	
Cylinder number	12
Aspiration system	Turbo, Aftercooled
Cooling method	Water cooled
Governor type	EFC Electronic
Bore x Stroke (mm)	159x159
Compression ratio	14.5:1
Rated speed (RPM)	1500
Displacement (L)	38
Rated power (KW)	813
Standby power (KW)	896
Oil consumption (g/kw.h)	≤4
Coolant capacity (L)	123.8 (Engine only)
Oil pan capacity (L)	135.1
Fuel system	CUMMINS PT Pump
Starter motor capacity	DC 24V

■ **Alternator Specification**



MODEL: LEROY SOMER TAD-A49-D	
Number of phase	3
Rated power (KW/KVA)	728/910
Frequency (Hz)	50
Power factor (Cos Phi)	0.8
Poles	4
Temp. rise	125K
Terminals	12
Insulation type	H class
Ambient temp.	40°C
IP rating	IP23
Excitation system	Self-excited
Bearing	Single bearing
Coating	Vacuum impregnation
Voltage regulator	A.V.R
Coupling	Flexible disc

Standard Supply Scope

- Industrial exhaust silencer
- Flexible pipes
- Float Battery charger
- Base frame
- Maintenance free battery
- Battery wires
- Manual books
- Digital control panel
- Water cooling radiator
- Wiring diagram
- Tool kits
- Main circuit breaker
- A.V.R
- Build-in based fuel tank
- Emergency stop button

■ **Optional Supply Scope**

Engine	Alternator	Generator Sets	Control Panel
<input type="checkbox"/> Water jacket pre-heater	<input type="checkbox"/> Anti-condensation heater	<input type="checkbox"/> Extended fuel tank 12h/24h/72h	<input type="checkbox"/> Remote control system
<input type="checkbox"/> Lubrication oil pre-heater	<input type="checkbox"/> PMG	<input type="checkbox"/> Soundproof canopy	<input type="checkbox"/> Build-in/External ATS
<input type="checkbox"/> Battery isolator	<input type="checkbox"/> STAMFORD alternator	<input type="checkbox"/> Trailer mounted	<input type="checkbox"/> Synchronizing System
	<input type="checkbox"/> GENLITEC alternator	<input type="checkbox"/> 20GP containerized canopy	<input type="checkbox"/> Power output sockets

■ **Warranty Period**

- 15 months or 1200 working hours, whichever comes first.
- GENLITEC Company will be limited with the supply of spare parts that are examined as manufacturing defects.
- CUMMINS engine and LEROY SOMER alternator will be subject to warranty policies from their companies. **(GLOBAL WARRANTY)**

Control Panel

Configuration

- Emergency stop button
- Protection MCB (Main circuit breaker)
- Float battery charger
- ATS connection
- AMF digital control module
- Fuel level meter
- Controller power switch
- Alarm buzzer

Features

- Chinese, English, Spanish, Turkish, Russian & French
- Three phase generator monitoring
- Automatic or manual start/stop of the gensets
- Push buttons for simple control & operation
- Generator measurements (50Hz/60Hz)
- Precision collect & display parameters about ENGINE
- Comprehensive shutdown or warning on fault condition
- Three phase generator protections
 - Over / under voltage
 - Over / under frequency
 - Current / voltage asymmetry
 - Over current / overload
- Three phase AMF function
 - Over / under voltage
 - Loss of phase detection function
- Emergency start function
- IP55 waterproof with rubber-ring gasket



Control Module Model: SMARTGEN HGM6120N

Display	LCD (132 x 64)
Operation panel	Silicon rubber
Digital input	5
Relay output	6
Analogue input	3
AMF	Yes
AC System	1P2W / 2P3W / 3P3W / 3P4W
Alternator voltage	15-360V (ph-N)
Alternator frequency	50/60Hz
KW/Amp Detecting & Display	Yes
Monitor interface	USB
Programmable interface	USB
DC supply	DC 8-35V
Operating temp.	-25 ~ +70°C

Controller Module Options

